



Philadelphia Department of Public Health
Division of Disease Control

THOMAS A. FARLEY, MD, MPH
Health Commissioner

CAROLINE JOHNSON, MD
Deputy Health Commissioner

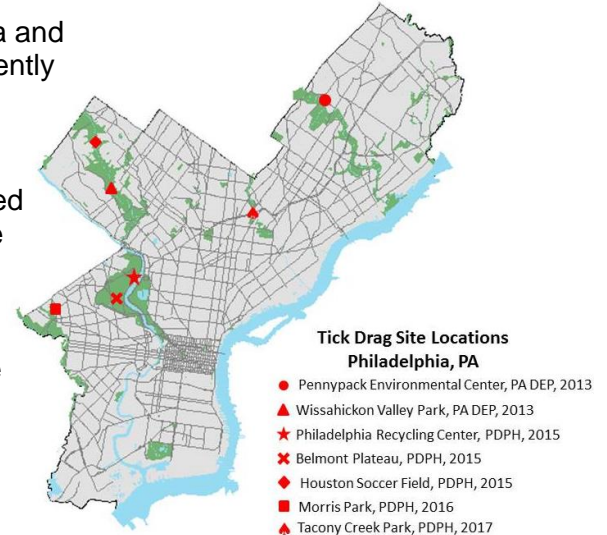
STEVEN ALLES, MD, MS
Director, Division of Disease Control

Health Advisory

Tickborne Diseases in Philadelphia: Recognition, Reporting, and Prevention May 31, 2018

The height of the 2018 season for tickborne infections in Philadelphia and surrounding areas is upon us. While Lyme disease is the most frequently diagnosed tickborne illness in Philadelphia residents, cases of babesiosis, anaplasmosis, ehrlichiosis, and Rocky Mountain spotted fever (RMSF) are reported every year. Highlighting the potential for tickborne infections in Philadelphia, 43% of blacklegged ticks collected in City parks since 2013 have tested positive for Lyme disease, while 5% and 4% tested positive for anaplasmosis and babesiosis, respectively.

Providers should also be aware of emerging tickborne infections, like Powassan virus and *Borrelia miyamotoi* that are transmitted by blacklegged ticks and have been identified in northern Pennsylvania counties, New Jersey, and New York. Powassan virus infection can cause meningoencephalitis similar to West Nile virus, and *Borrelia miyamotoi* can cause relapsing febrile illness.



Patients presenting with rash or “flu-like” symptoms, including fever, fatigue, and lymphadenopathy, should be evaluated for tickborne illnesses during months of increased tick activity (April–October). See Table 1 for further details on tickborne disease symptoms and diagnostic testing. Please remember to report all suspected or confirmed cases of babesiosis, anaplasmosis, ehrlichiosis, RMSF, and Lyme disease (including clinically-diagnosed erythema migrans) within 5 days to PDPH by telephone at (215) 685-6748 or fax at (215) 238-6947. For tickborne disease testing inquiries, call (215) 685-6742.

Tick Bite Prevention

Providers should advise patients to take the following tick bite prevention tips when spending time outdoors:

- Wear insect repellent that contains DEET (≥20%) or another EPA-approved repellent and reapply as directed. Wearing clothing and gear that has been treated with permethrin will also help repel ticks.
- Avoid ticks by walking in the center of trails and staying away from wooded or brushy areas with high grass and leaf litter.
- Conduct a full-body tick check and shower or bathe within two hours of returning indoors. Remove attached ticks with fine-tipped tweezers.
- Place clothes in a dryer on high heat for 10 minutes to kill ticks.
- Check pets for ticks daily, especially after spending time outdoors, and use tick repellent products.

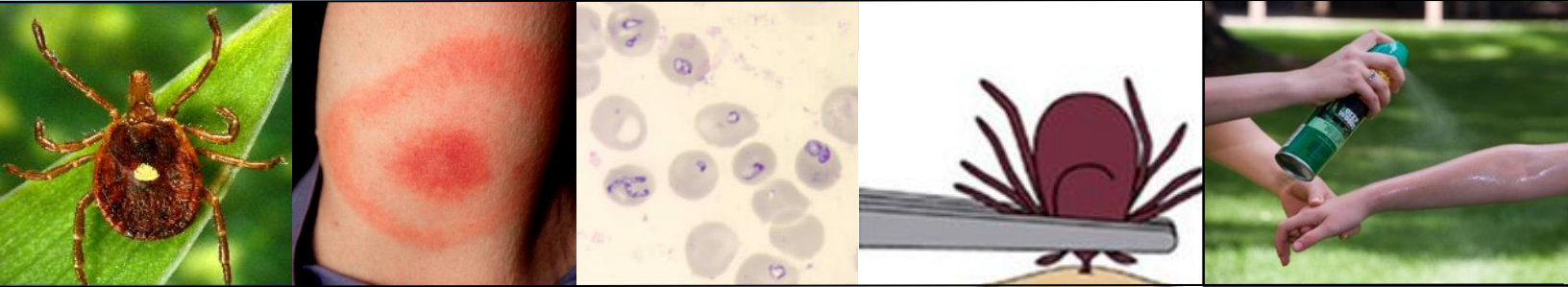
Provider Resources

- PDPH is offering an onsite presentation entitled *Overview of Tickborne Diseases in Philadelphia*. See the attached flyer for further details.
- Tickborne diseases of the United States. *A Reference Manual for Health Care Providers*: <http://www.cdc.gov/lyme/resources/tickbornediseases.pdf>
- HHS Working Group on Lyme and Other Tickborne Diseases Presents: *Trends in Tickborne Diseases in the United States*: <https://www.youtube.com/watch?v=p6ZIEcaJDrw>
- Free prevention education materials for patients from the CDC: <https://www.cdc.gov/lyme/toolkit/>
- Philadelphia-specific tickborne disease surveillance updates on PDPH’s Health Information Portal: <https://hip.phila.gov/DataReports/TickborneDiseases>

Table 1. Epidemiologic and Clinical Characteristics of Tickborne Infections

	Lyme Disease	Babesiosis	Anaplasmosis	Ehrlichiosis	RMSF
Main Vector	Blacklegged tick	Blacklegged tick	Blacklegged tick	Lone star tick	American dog tick
Incubation Period	3-30 days (from tick bite to rash development, if rash develops)	1–3 weeks	1–2 weeks	1–2 weeks	2–14 days
Rash	Erythema migrans in 70-80% of patients	--	Rare	30%	Spotted rash ~90% of patients
Complications	Early-disseminated disease: A-V block, Bell's palsy, cranial neuritis, Lymphocytic meningitis/encephalitis/encephalomyelitis, multiple erythema migrans Late-onset: arthritis, radiculoneuropathy	Hepatosplenomegaly, Thrombocytopenia, hemolytic anemia, death (5% CFR in untreated cases infected with <i>B.microti</i>)	Difficulty breathing, hemorrhage, Thrombocytopenia, leukopenia, LFT increases, renal failure, neurological problems, death (<1% CFR in untreated cases)	Difficulty breathing, bleeding disorders, Thrombocytopenia, leukopenia, LFT increases, death (1% CFR in untreated cases)	Hearing loss, Thrombocytopenia, leukopenia, mild LFT increases, amputation of extremities or limbs, paralysis, mental disability, death (30% CFR in untreated cases)
Laboratory Tests	A positive two-tier test. (This is defined as a positive or equivocal enzyme immunoassay (EIA) or immunofluorescent assay (IFA) followed by a positive Immunoglobulin M1 (IgM) or Immunoglobulin G 2 (IgG) western immunoblot (WB) for Lyme disease)	Microscopy PCR in whole blood	PCR IgG antibody titer to <i>A.phagocytophilum</i> antigen by IFA demonstrating a four-fold changes in paired serum samples Identification of morulae in the cytoplasm of monocytes or macrophages by microscopic examination	PCR IgG antibody titer to <i>E. chaffeensis</i> antigen by IFA demonstrating a four-fold changes in paired serum samples Identification of morulae in the cytoplasm of monocytes or macrophages by microscopic examination	IgG antibody testing by IFA demonstrating a four-fold changes in paired serum samples
Treatment	Doxycycline Cefuroxime axetil Amoxicillin	Atovaquone PLUS azithromycin; OR clindamycin PLUS quinine	Doxycycline	Doxycycline	Doxycycline

Overview of Tickborne Diseases in Philadelphia



The Philadelphia Department of Public Health's (PDPH) Division of Disease Control is offering a 60-minute in-person presentation "Overview of Tickborne Diseases in Philadelphia" for local health care providers. The presentation will include a review of tickborne disease symptoms, diagnostics, treatment, surveillance summaries, reporting requirements, and available prevention education resources.

Presentations can be given on-site at health care facilities. Free continuing education credit is available for nurses, physicians, and PAs.*

Session Topics and Objectives:

- Overview of the current epidemiology of tickborne diseases in Philadelphia
- Review the clinical presentation and symptoms of tickborne diseases in Philadelphia, as well as risk factors and common exposure sources
- Highlight availability of diagnostic testing and review treatment options
- Describe the role of providers and PDPH in tickborne disease surveillance, case reporting, and disease investigation
- Outline reporting methods and requirements for providers
- Review tickborne disease prevention messages

For questions or to schedule a presentation at your facility, contact Emily Kehoe, MPH via telephone at (215) 685-4502 or email at emily.kehoe@phila.gov.

**Free continuing education credit available for 60-minute presentations attended from July 1, 2018 – June 30, 2019*